

THE CHRISTMAS SONG (CHESTNUTS ROASTING ON AN OPEN FIRE)

© 1946, 1967 EDWIN H. MORRIS & COMPANY, A Division of MPL Communications, Inc.
 © Renewed 1974 EDWIN H. MORRIS & COMPANY, A Division of MPL Communications, Inc.
 International Copyright Secured. All Rights Reserved.

Words and Music by
 Mel Torme and Robert Wells

Moderately

E \flat 6 B \flat 7 E \flat 6 Fm7 B \flat 7 E \flat 6 B \flat m7 E \flat 9 A \flat G7#5 Cm7 A \flat m6



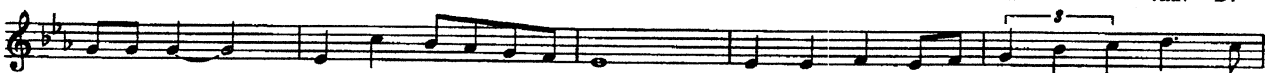
Chest-nuts roast-ing on an op-en fire, Jack Frost nip-ping at your nose. Yule-tide car-ols be-ing

E \flat Am7 D7 G \flat M7 A \flat m7 D \flat 9 G \flat M7 Fm7 B \flat 7 E \flat 6 B \flat 7



sung by a choir and folks dressed up like Es-ki-mos. Ev-'ry-bo-dy knows a tur-key and some

E \flat 6 Fm7 B \flat 7 E \flat 6 B \flat m7 E \flat 9 A \flat G7#5 Cm7 A \flat m6 E \flat Am7 D7



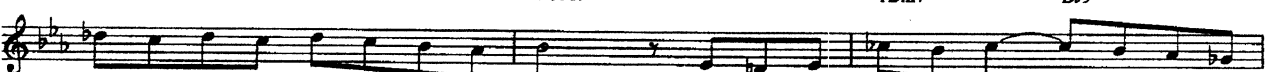
mis-tle-toe — help to make the sea-son bright. Ti-ny tots with their eyes all a-glow will

Gm7 C7 Fm7 B \flat 7 E \flat 6 B \flat m7 E \flat 9 A \flat G7#5 Cm7 A \flat m6 E \flat Am7 D7



find it hard to sleep to-night. They know that San-ta's on his way; he's load-ed

B \flat m7 E \flat 9 A \flat M7 A \flat m7 D \flat 9



lots of toys and good-ies on his sleigh. And ev-'ry moth-er's child — is gon-na

G \flat M7 Cm7 F7 Fm7 B \flat 7 \flat 9 E \flat 6 B \flat 7



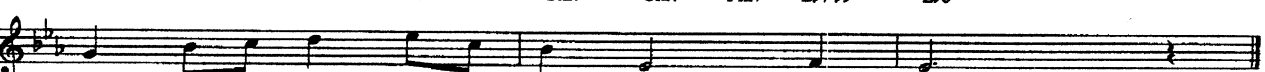
spy — to see if rein-deer — real-ly know how to fly. And so, I'm of-fer-ing this

E \flat 6 Fm7 B \flat 7 E \flat 6 B \flat m7 E \flat 9 A \flat G7 Cm7 A \flat m7



sim-ple phrase to kids from one to nine-ty-two. Al-though it's been said ma-ny

E \flat Cm7 D7 F \sharp dim7 Gm7 Cm7 Fm7 B \flat 7 \flat 9 E \flat 6



times, ma-ny ways: "Mer-ry Christ-mas to you."